

WRC

# Breakthrough Breakfast

Empowerment for Better Tomorrows

## SPONSORSHIP OPPORTUNITIES

**APRIL 18, 2024**  
**8:30 am - 10:30 am**

Philadelphia Country Club  
Gladwyne, PA

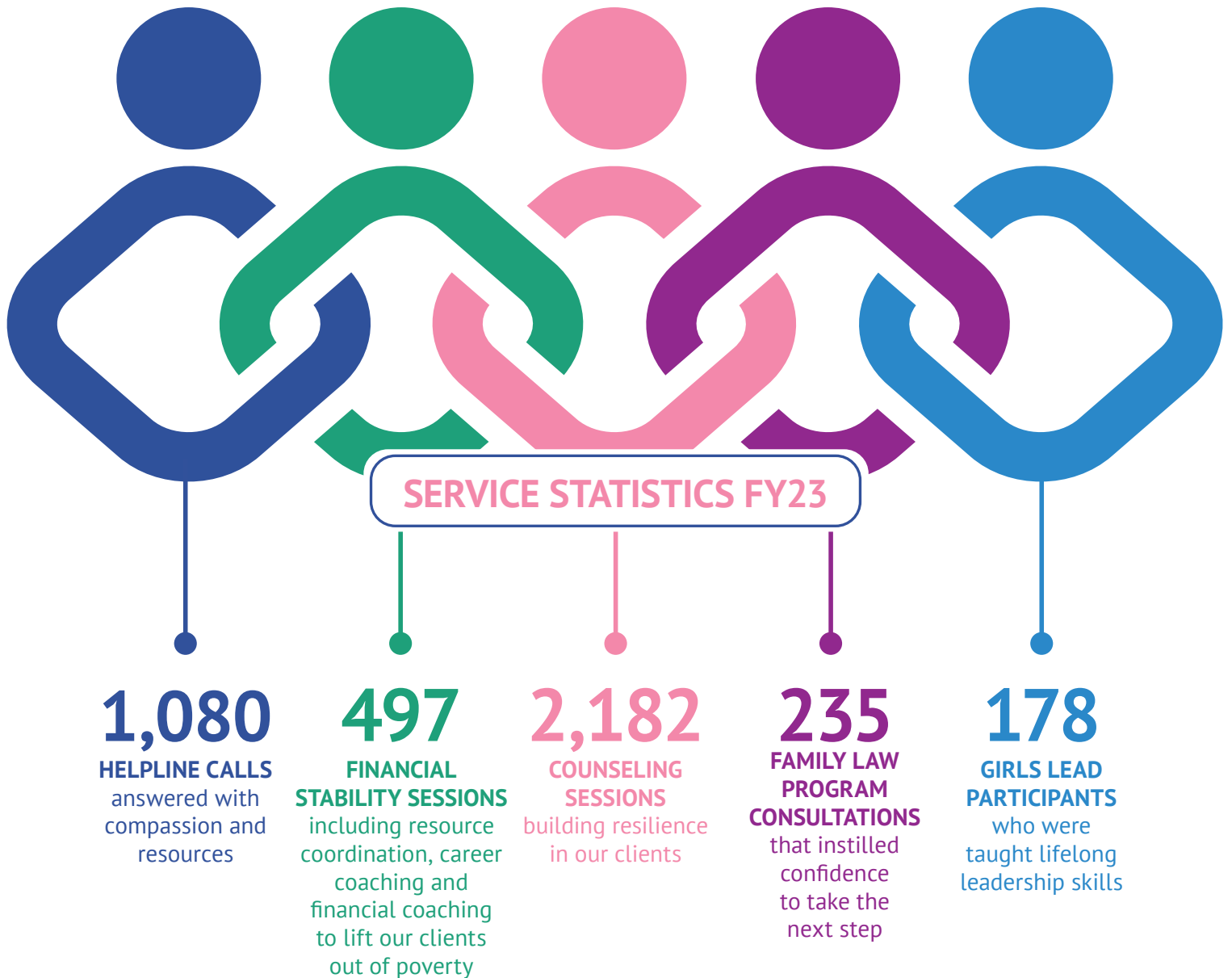
**WRC**  
Women's Resource Center  
*Serving Southeastern PA*  
Support ■ Strengthen ■ Serve

[www.womensresourcecenter.net](http://www.womensresourcecenter.net)



*Featuring a Fireside Chat with  
Kim Jenson, Chief Operating Officer,  
Senior Vice President,  
Raymond James Private Client Group*

# Sponsorships Help WRC Empower Women and Girls in the Community



## *Our Mission*

The Women's Resource Center (WRC) is a community-based nonprofit organization serving women and girls throughout southeastern PA for more than 45 years. Our mission is to assist women and girls to successfully navigate life's transitions and to inspire others to do the same. By providing resources, tools and support for today, we create hope for tomorrow. Last year, our outreach in knowledge, resources and support numbered over 3,500 connections to women and girls to help overcome life's challenges.

# Sponsorship Opportunities

	Vision Sponsor \$10,000	Courage Sponsor \$5,000	Hope Sponsor \$3,500	Leadership Sponsor \$2,000	Perseverance Sponsor \$500
Reserved Seating (Tables of 10)	2 Tables (20 Tickets)	1 Table (10 Tickets)	1 Table (10 Tickets)	5 Tickets	2 Tickets
Sponsor recognition at event	✓	✓	✓	✓	✓
Logo on website and signage	✓	✓	✓	✓	
Color ad in program booklet	Full Page	Full Page	Half Page	Quarter Page	
Table Sponsor Signage & VIP seating	✓	✓	✓		
Individual Sponsorship Recognition via Social Media Post	✓	✓			
Introduction of Keynote Speaker	✓				
Press release mention	✓				

**Regular Ticket Price \$70**

***To secure your sponsorship package, email [annemarie@womensrc.org](mailto:annemarie@womensrc.org) or call (267) 536-9524.***

# About Our Speaker

## Kim Jenson

*Chief Operating Officer, Senior Vice President,  
Raymond James Private Client Group*

Kim Jenson is chief operating officer of Raymond James Financial's Private Client Group (PCG). She leads several internal teams, including PCG Strategy & Planning, Associate Financial Services, Investment Central, PCG Education & Practice Management, AdvisorChoice Consulting, Succession & Acquisition Planning, and Advisor Inclusion Networks, as well as the firm's Private Wealth and Sustainable Investing initiatives.



Kim has more than 30 years of financial services experience. Prior to joining Raymond James in 2017, she held senior leadership roles at both UBS and Piper Jaffray. Her industry leadership experience includes correspondent banking, treasury management, trust and investment services, product development and sales, wealth management field management, coaching and development, and recruiting.

A graduate of Minnesota State University, Kim has also completed programs at the Wharton School's Securities Industry Institute (SII), the Duke Fuqua School of Business, Certified Corporate Cash Manager – Treasury Management Institute, and the Center for Creative Leadership.

Kim has received multiple awards throughout her career, including the 2020 InvestmentNews Women to Watch and the 2022 Tampa Bay Business Journal BusinessWoman of the Year. An active member of both local and international communities, she has served on the board of trustees for the Minnesota Orchestra, Minnesota Public Radio, Chicago Foundation for Women, Stanley Manne Children's Research Institute, Johns Hopkins All Children's Hospital and Friends of Ngong Road.

## WRC BOARD OF DIRECTORS

Tameka Morris, President  
Diane McCammon, Vice President  
Nadia Gallagher, Secretary  
Tyler Dornbusch, Treasurer

### Board Members

Bridgett Battles  
Carmen Billups  
Jennifer Bilotta  
Cheryl Carleton  
Patti Conlan  
Kara Goodchild  
Jessica Guadalupe  
Kym Johnson  
Rebecca Perkins  
Meghan Popoleo

## WRC ADVISORY COUNCIL

Ellie Barger  
Millie Bell  
Shannon Breuer  
Karen Clay  
Diane Dalto  
Brenda DeFeo  
Sandra Donahue  
Joslyn Ewart  
Michelle Flamer  
Anne Hamilton  
Kate Hermans  
Carol Jane

Lisa Kohn  
Gayla McCluskey  
Jami Wintz McKeon  
Phebe Novakovic  
Barbara Pettit  
Shelley Potente  
Stephen Prichard  
Eileen Connolly Robbins  
Tracey Saunders  
Jacqueline Segal, Esq.  
Martha Tavantzis  
Betty Uhlman  
Liz Weber  
Debra Yelson

**To secure your sponsorship package, email  
[annemarie@womensrc.org](mailto:annemarie@womensrc.org) or call (267) 536-9524.**

